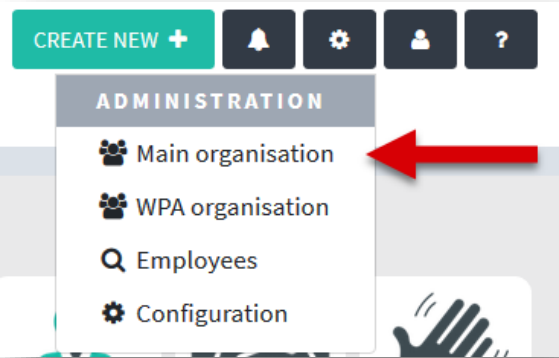
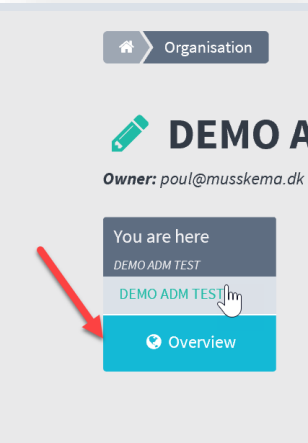


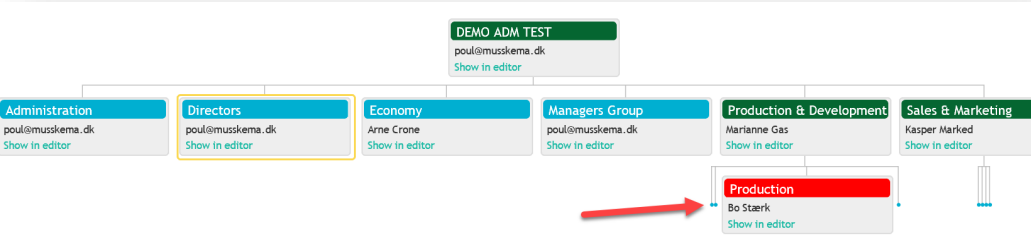
# Organisational overview



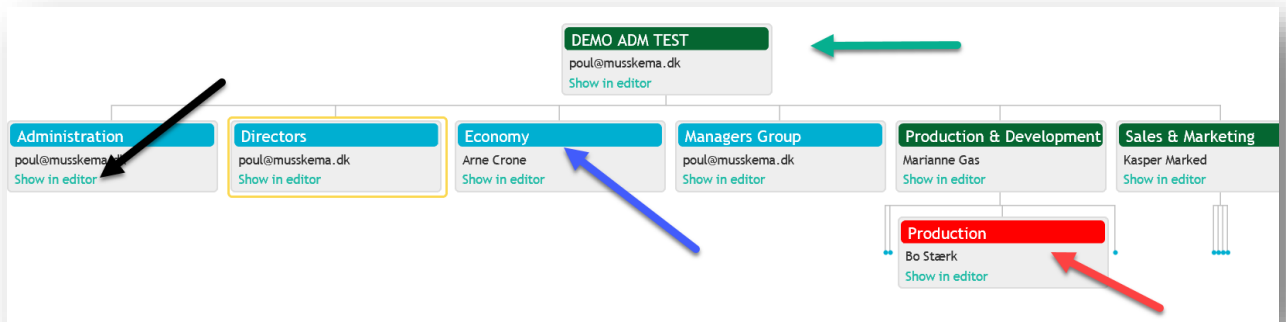
1. Select 'Main organisation'



2. Select 'Overview'



3. Here you can get an overview of the organisation such as it is built with teams and departments. Click on the small dots, and you will see even more departments and teams. You can also scroll back and forth.



4. The colour of the bar indicates whether it is a **department** or a **team**:

- **Green:** Departments
- **Blue:** teams
- **Red:** Shows the department or team that you are currently viewing
- **Black:** This is a link to the team or department