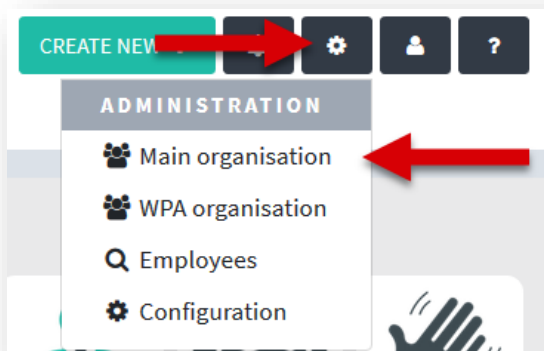
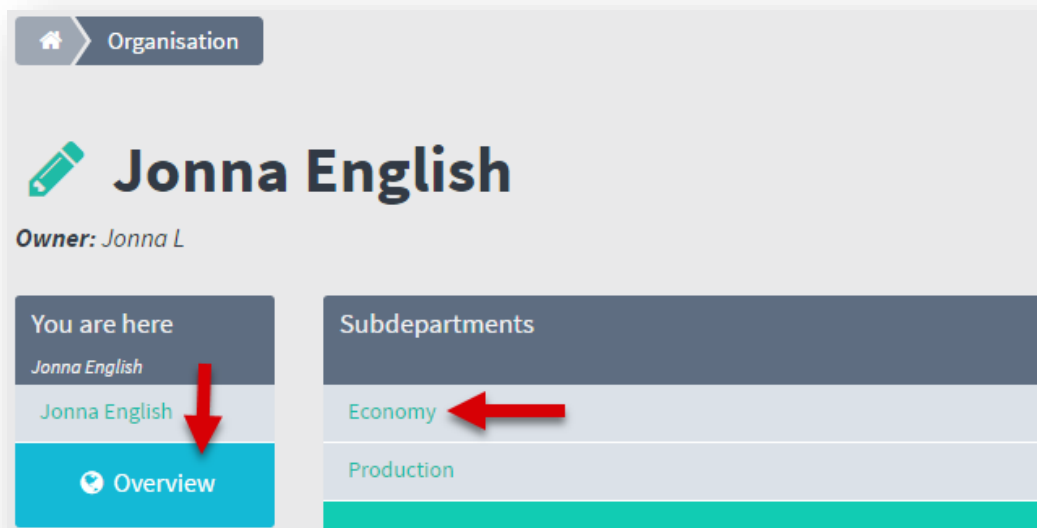


# Moving departments and teams

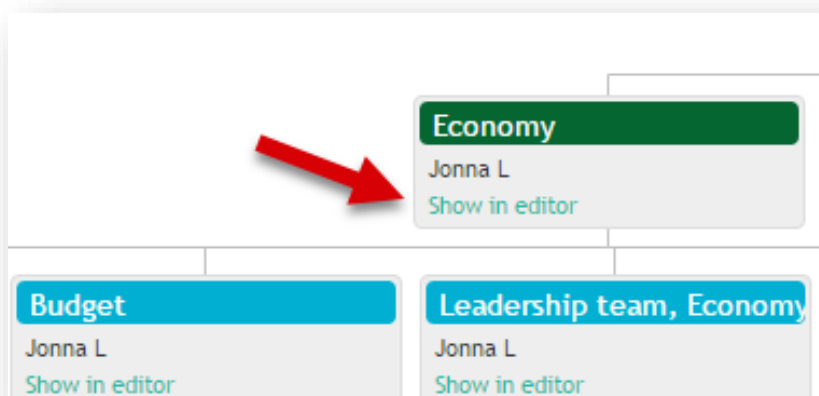
## Move department:



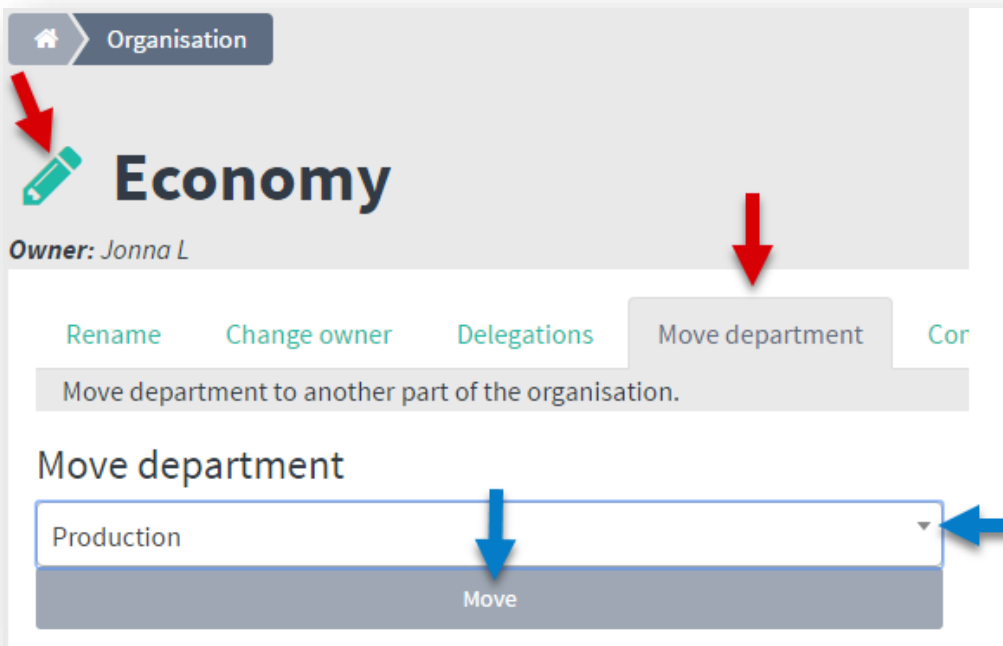
1. Select 'Main organisation'



2. Select the concerned department by clicking the department's name...

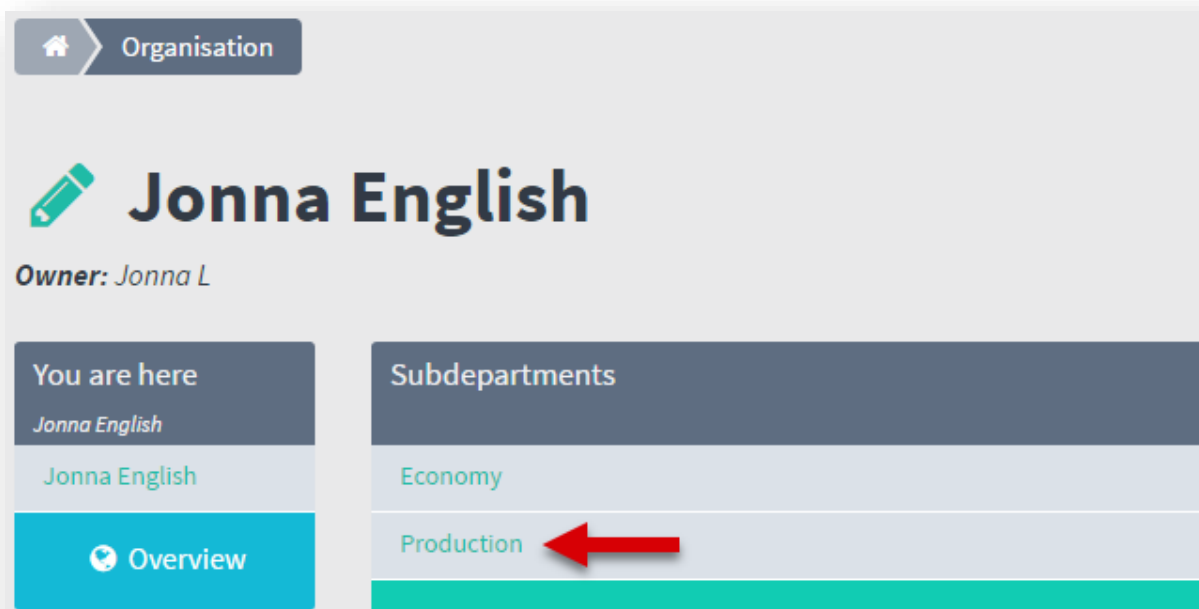


3. ...or the link in 'Overview'

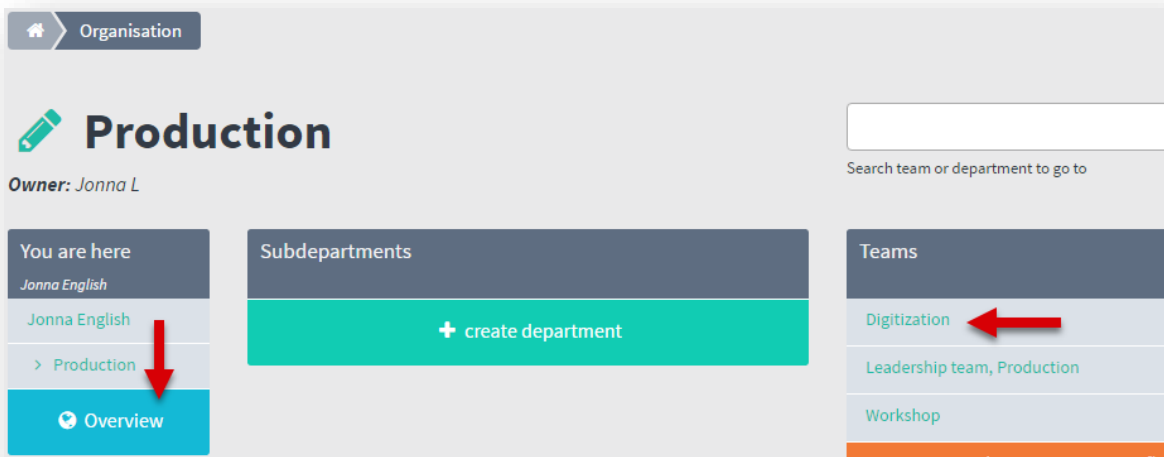


4. Click the pencil and select 'Move department' (red arrows). Then select where in the organisation the department should be moved to (blue arrows).

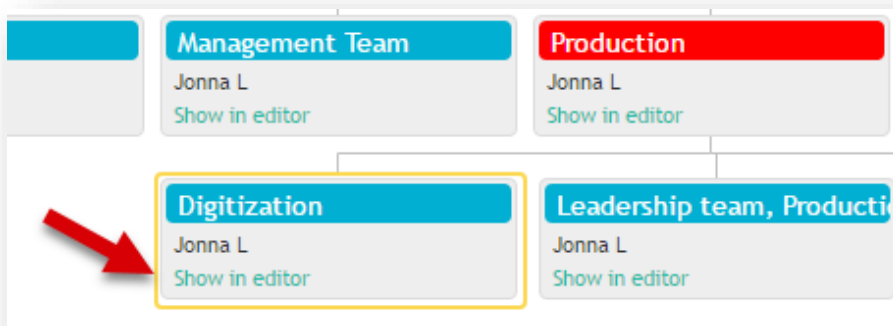
### Move team:



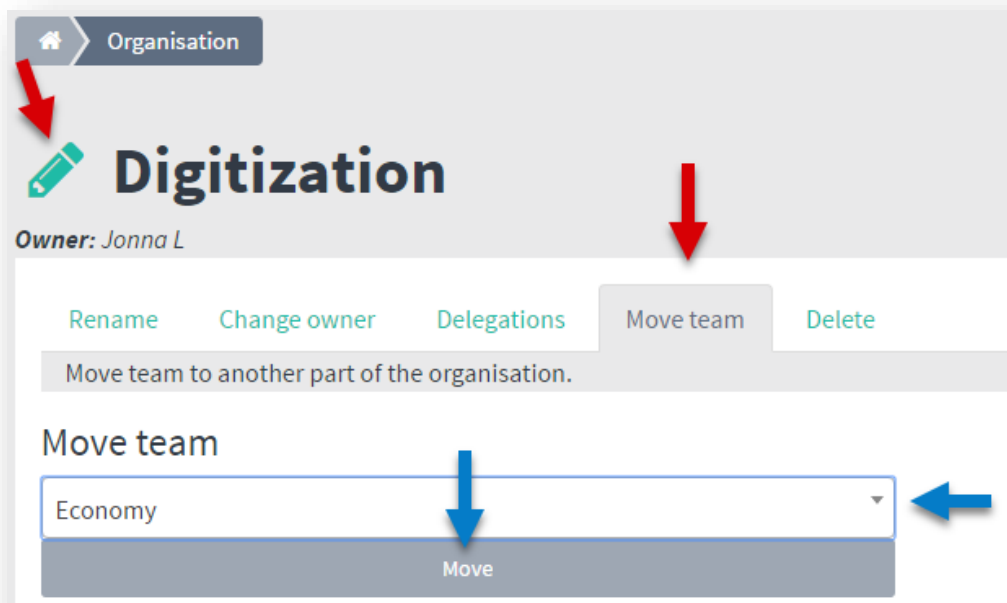
1. Select the department in which the team is located.



2. Then select the concerned team by clicking it's name...



3. ...or the link in 'Overview'



4. Click the pencil and select 'Move team' (red arrows). Now select where the team should be moved to (blue arrows).